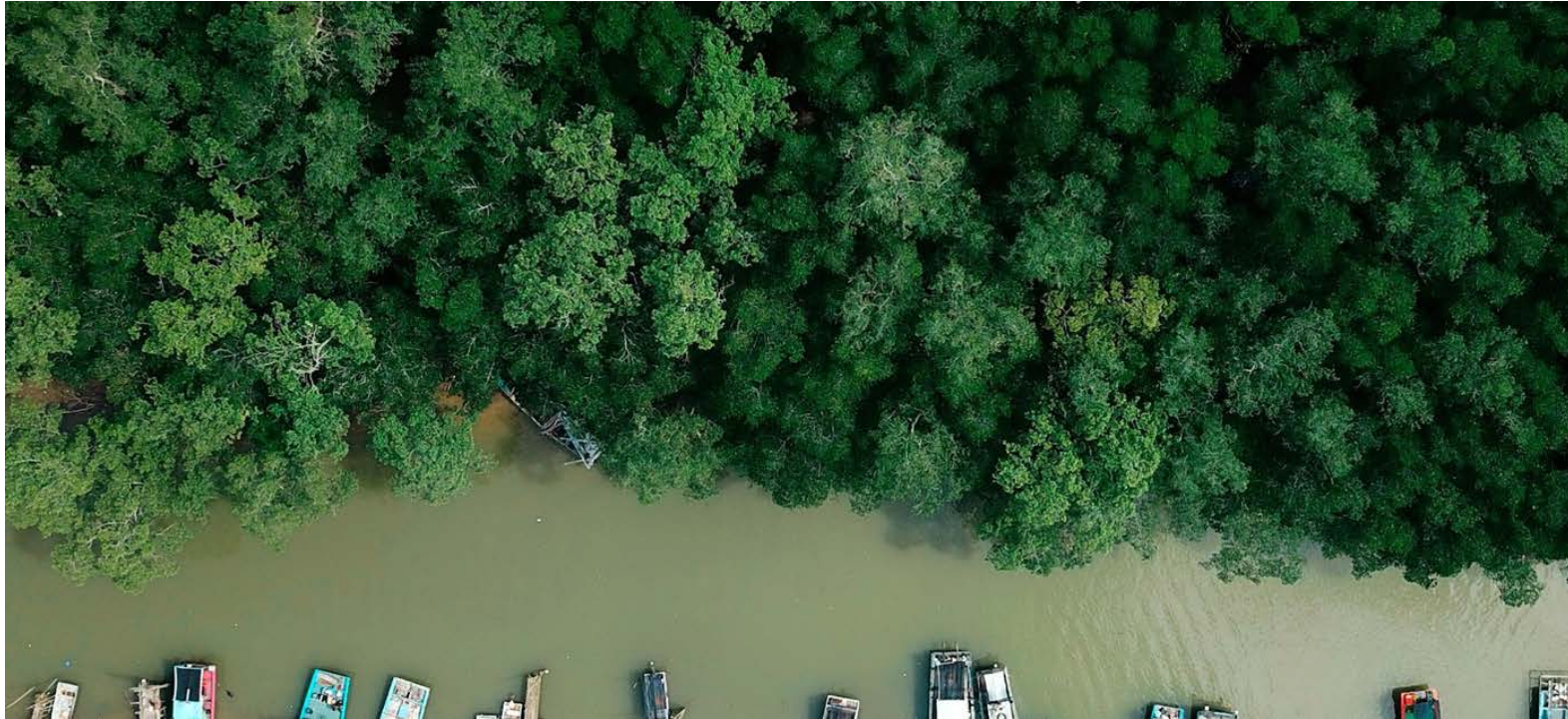




Health made possible

Reducing the Digital Divide: How to Ensure an Enabling Environment for Equitable Tech for All





14%
of World's
Population



3%
of World's Health Force

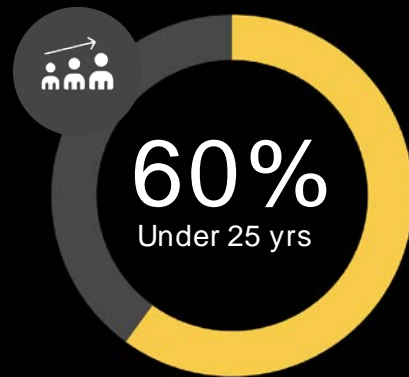


25%
of Global Burden
of Disease

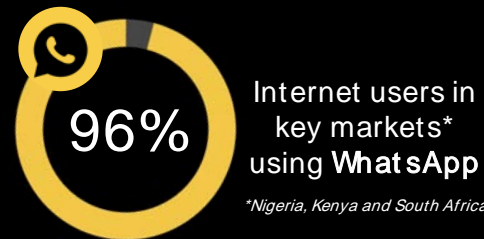
Sub-Saharan Africa lacks sufficient medical personnel to tackle the growing crisis of accessible, equitable and quality healthcare.



Despite these challenges, Sub-Saharan Africa's **youthful population** and widespread **mobile connectivity** present a significant opportunity to improve healthcare access and delivery through familiar platforms like WhatsApp and SMS.

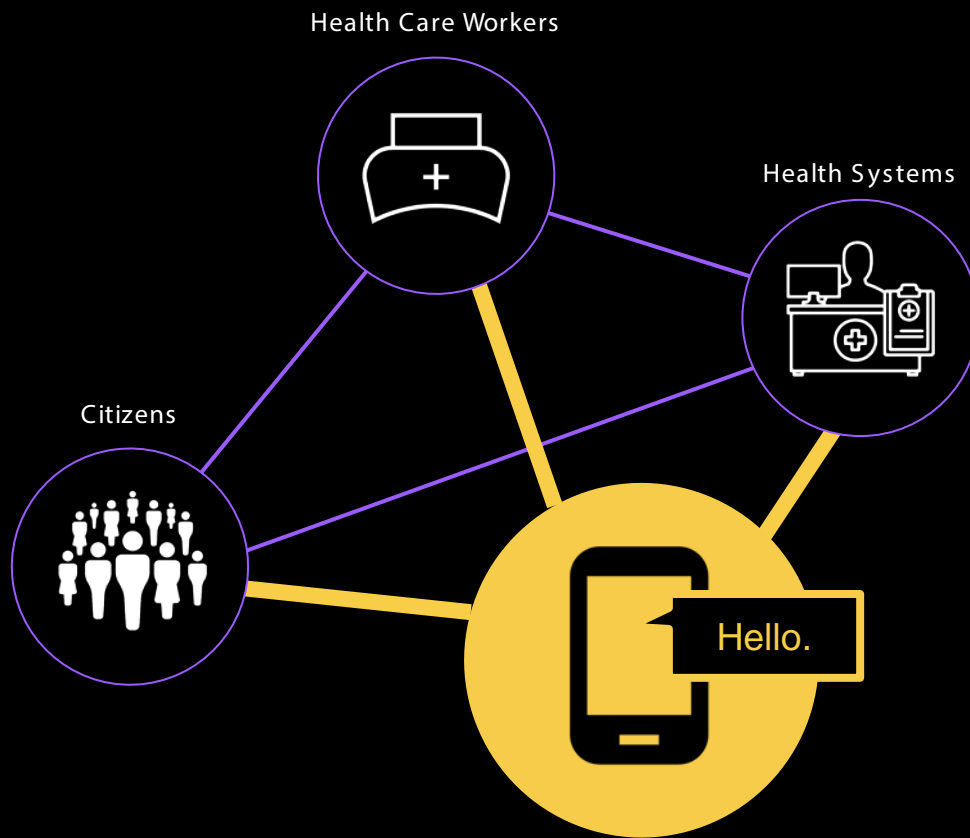


 **400mm+**
Smartphone Connections





Reach bridges the gaps in health care with **mobile-based tools and services** that support and extend the capabilities of health systems.





Opportunities for
Impact and
possibilities of
increasing inequity are
two sides of the same
coin



Direct to citizen communication

Hello.

Hi! What brings you
here today?





OVERALL
Phase 3



LEADERSHIP & GOVERNANCE
Phase 4



STRATEGY & INVESTMENT
Phase 3



LEGISLATION, POLICY, & COMPLIANCE
Phase 3



WORKFORCE
Phase 2



STANDARDS & INTEROPERABILITY
Phase 3

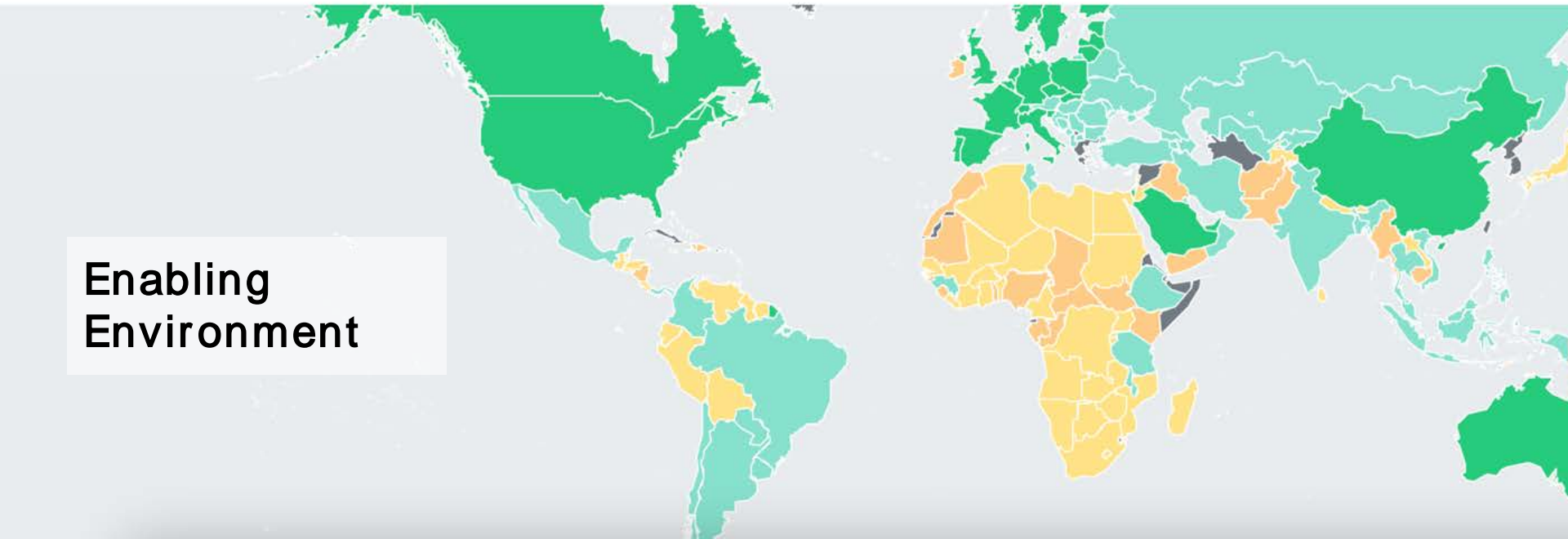


INFRASTRUCTURE
Phase 4



SERVICES & APPLICATIONS
Phase 3

Enabling
Environment





Intersection of Climate and Health





AI - Particularly
Generative AI





Health made possible

Thank you

Compiled by

Debbie Rogers

CEO

debbie@reachdigitalhealth.org

